

Slope disaster along Bhoté Kosi River, induced by Nepal-Gorkha earthquake in 2015

*Hiroshi YAGI¹, Yu Hirose¹, Daisuke Higaki², Akihiko Wakai³, Masahiro Chigira⁴, Go Sato⁵, Hiroshi, P. Sato⁶

1.Faculty of Art, Science and Education, Yamagata University, 2.Faculty of Agriculture and Life Sciences, Hirosaki University, 3.Graduate School of Science and Technology, Gunma University, 4.DPRI, Kyoto University, 5.Graduate School of Environmental Information, Teikyo Heisei University, 6.Faculty of Humanities & Sciences, Nihon University

Nepal-Gorkha earthquake 2015 induced innumerable landslides in mountainous area of the Great Himalayas. Most of them are shallow slope failures. They are mainly distributed just below breaks of slopes along troughs of major rivers incising the Great Himalayas. This study reports the detail distribution of landslides and discusses geomorphological and geological characteristics of the landslides' sites.

Keywords: Nepal-Gorkha earthquake 2015, slope disasters, break of slope

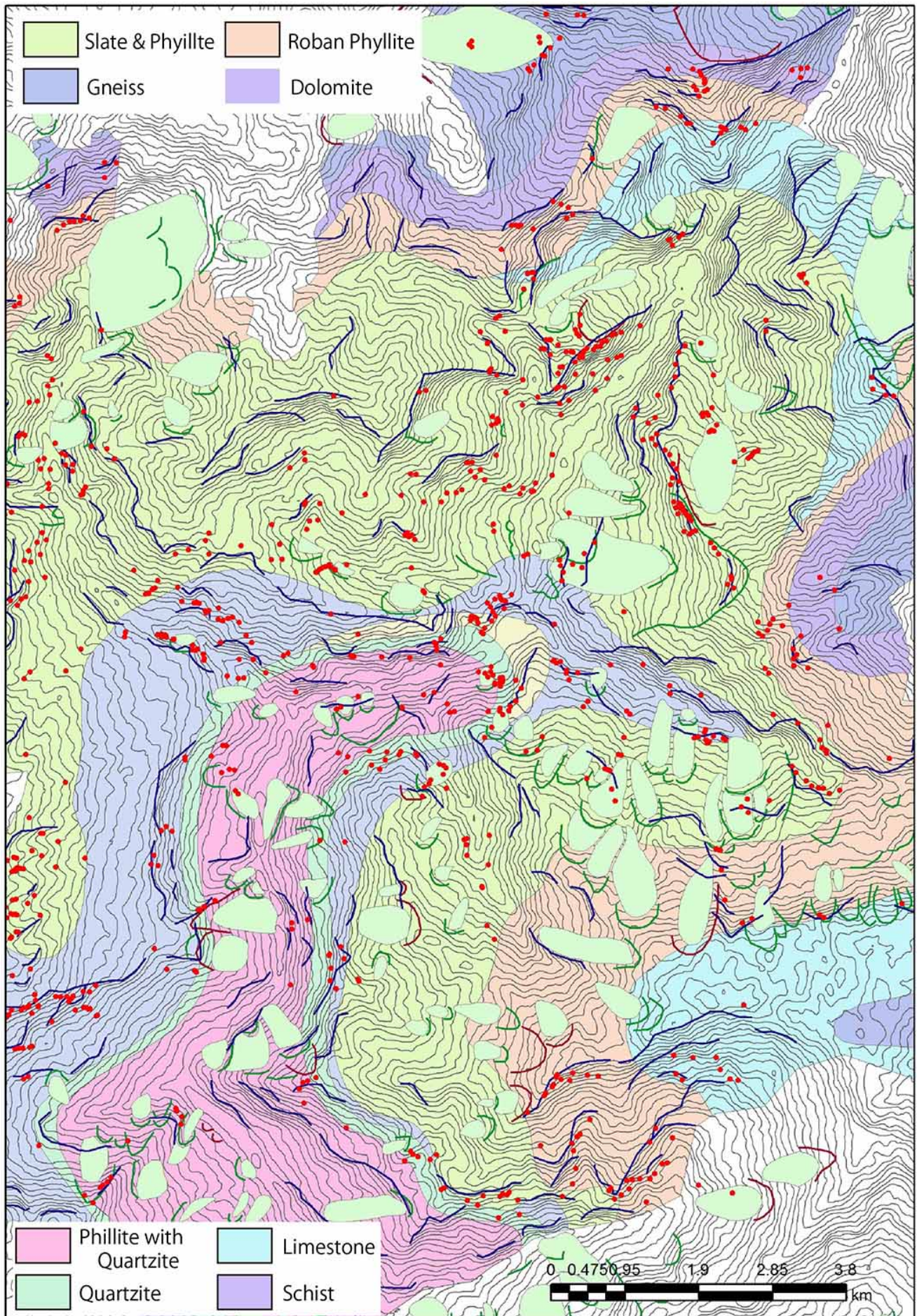


Fig.1 Distribution of landslides, geology and break of slope