

## 沖縄トラフ熱水チムニー中における古細菌の極性膜脂質の解析 Analysis of archaeal intact polar membrane lipids in hydrothermal chimneys from Okinawa Trough

\*宝来 俊育<sup>1</sup>、奈良岡 浩<sup>1</sup>、宮崎 淳一<sup>2</sup>

\*Shunsuke Horai<sup>1</sup>, Hiroshi Naraoka<sup>1</sup>, Junichi Miyazaki<sup>2</sup>

1. 九州大学、2. 海洋研究開発機構

1. Kyushu University, 2. JAMSTEC

Intact polar membrane lipids (IPLs) are suitable biomarkers for viable microorganisms because the polar head groups are hydrolyzed and removed from core lipids (CLs) soon after the cell death. Although IPLs analysis has been successfully applied in several environments, previous studies in deep-sea hydrothermal vents are sparse and have been restricted to a few hydrothermal fields.

In this study we have performed the analysis of lipid compositions of active chimney fragments collected from the Yokosuka hydrothermal field on the Southern Okinawa Trough back-arc basin. We have newly developed a HPLC-high resolution mass spectrometry protocol for the simultaneous screening of IPLs and those degradation products (i.e. CLs) that enabled the detection of a wide range of lipid biomarkers in small and complex mixtures of samples.

A previous DNA sequence survey reported two archaeal strains, *Methanococcales* and *Thermoplasmatales* from the same samples from the Yokosuka hydrothermal field [1]. However, most IPLs detected in this study could be produced by (hyper-) thermophilic methanogens including *Methanococcales*. The IPLs originated from *Thermoplasmatales* were not detected but the CLs including cyclopentane-containing GDGTs were present. In addition, the detection of archaeol with phosphatidylcholine head group (PC-AR, Fig.1) in this study suggests the presence of another strain of hyperthermophilic methanogen *Methanopyrus kandleri* in the chimney.

These results indicate that the utility of IPL approach using the new simultaneous screening protocol is an effective technique to evaluate microbial activity in various samples.

[1] Miyazaki J., Kawagucci S., Makabe A., Kitada K., Torimoto J., Matsui Y., Tasumi E., Shibuya T., Nakamura K., Horai S., Sato S., Ishibashi J., Kanezaki H., Nakagawa S., Hirai M., Takaki Y., Okino K., Kayama H.W., Kumagai H., Chong C. (2017) Deepest and hottest hydrothermal activity in the Okinawa Trough: the Yokosuka site at Yaeyama Knoll. *R. Soc. open sci.* **4**: 171570.

キーワード：極性膜脂質、古細菌、深海熱水噴出孔、一斉スクリーニング分析法

Keywords: Intact polar membrane lipids, Archaea, Deep sea hydrothermal vent, Simultaneous screening protocol

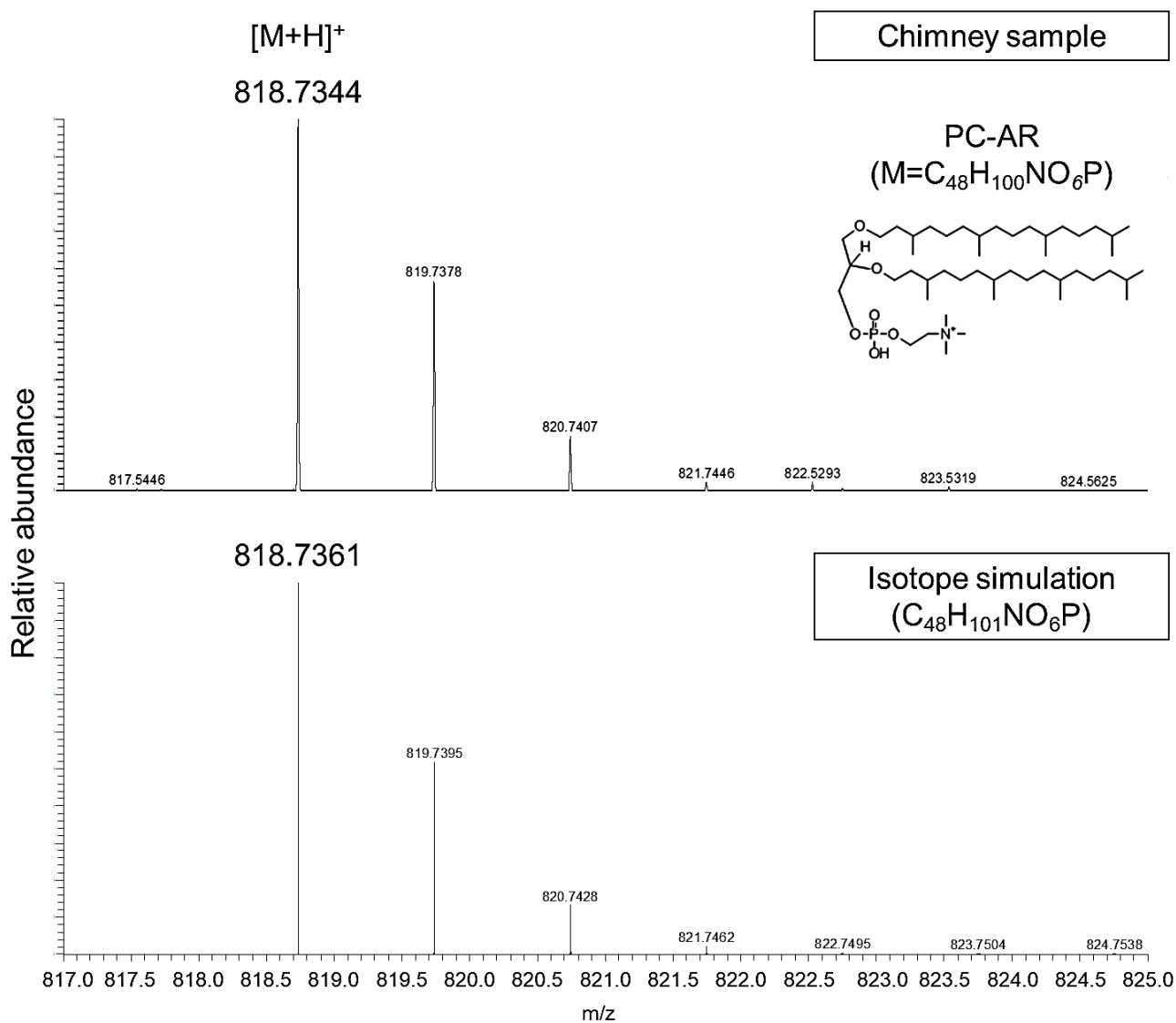


Fig. 1 Positive mode mass spectra of PC-AR detected in the chimney sample and simulated isotopic distribution pattern for  $C_{48}H_{101}NO_6P$ .