

Collaboration between Geology and Art –Special Exhibition using Surface Peel Specimens in Kanagawa Prefectural Museum of Natural History–

*Saeko Ishihama¹, Kiminori Taguchi¹, Mitsuharu Oshima¹

1. Kanagawa Prefectural Museum of Natural History

Kanagawa Prefectural Museum of Natural History has repositied surface peel specimens with sense of art. We acted special exhibition using dozens of surface peel specimens toward collaboration between geology and art in the summer and fall of 2017. Also we conducted the science café about relationship between science and art with geologist and artist and the audience. Many visitors answered a questionnaire that they felt beauty, curiousness or art from these specimens. We used artistic technique also to show scientific discoveries in the exhibition. Cartoons with original characters made easy for the visitors to understand the scientific fact that the curators wanted to express.

Keywords: surface peel specimen, exhibition, art



Fig.1 Flyer of the special exhibition.

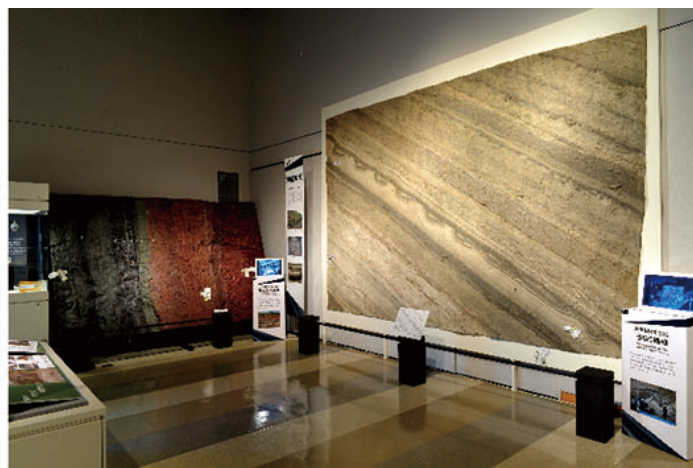


Fig.2 Exhibited surface peel specimens with sense of art.

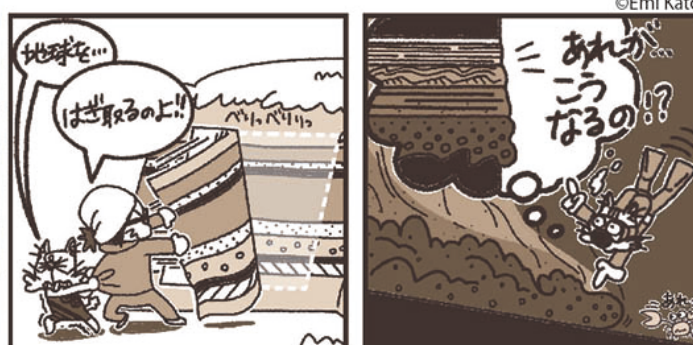


Fig.3 Cartoons with original characters showing surface peeling and turbidite.