

「Earth, Planets and Space」のオープンアクセス出版:これまでの実績と今後の展望

"Earth, Planets and Space" An Open Access Journal: Achievement and Future

*小川 康雄¹、馬場 聖至²

*Yasuo Ogawa¹, Kiyoshi Baba²

1. 東京工業大学理学院火山流体研究センター、2. 東京大学地震研究所

1. Volcanic Fluid Research Center, School of Science, Tokyo Institute of Technology, 2. Earthquake Research Institute, University of Tokyo

EPS (Earth, Planets and Space) is a peer-reviewed open access journal published on behalf of the following five societies; The Society of Geomagnetism and Earth, Planetary and Space Sciences, The Seismological Society of Japan, The Volcanological Society of Japan, The Geodetic Society of Japan, The Japanese Society for Planetary Sciences. These five societies are all society members of the Japan Geoscience Union. From 2018, EPS will strengthen ties with JPGU as a journal under JPGU.

EPS covers scientific articles in Earth and Planetary Sciences, particularly geomagnetism, aeronomy, space science, seismology, volcanology, geodesy, and planetary science. EPS also welcomes articles in new and interdisciplinary subjects, including instrumentations. Only new and original contents will be accepted for publication.

EPS was established in 1998 as a continuation of the two journals, the Journal of Geomagnetism and Geoelectricity (1949 to 1997) and the Journal of Physics of the Earth (1952 to 1997). In 2014 we started open access publication under the SpringerOpen platform. Open Access publication successfully shortened the publication time, increased visibility of the journal and widened its international readership. We publish average of 190 papers per year and half of the authors are from overseas. One of the qualification indices of the journal, impact factor (IF), is continuously increasing from 1.328 (2014) to 2.243 (2016) and it will go over 2.5 in 2017.

EPS has the following four article types; Full Paper, Express Letter, Frontier Letter and Technical Reports. Full paper has no limit in size. Express Letter is a short article for a quick publication of new findings, which was introduced in 2017. Frontier Letter is a short article invited by the editor in chief. Technical report is for publication on a software tool or an experimental or computational method, test or procedure or hardware design.

We have expanded the editorial board members in 2017 to speed up the reviewing process. Editorial board members are international (currently 40 percent from overseas) and we provide qualified reviews. We will further increase the number of international editorial board members in the near future.

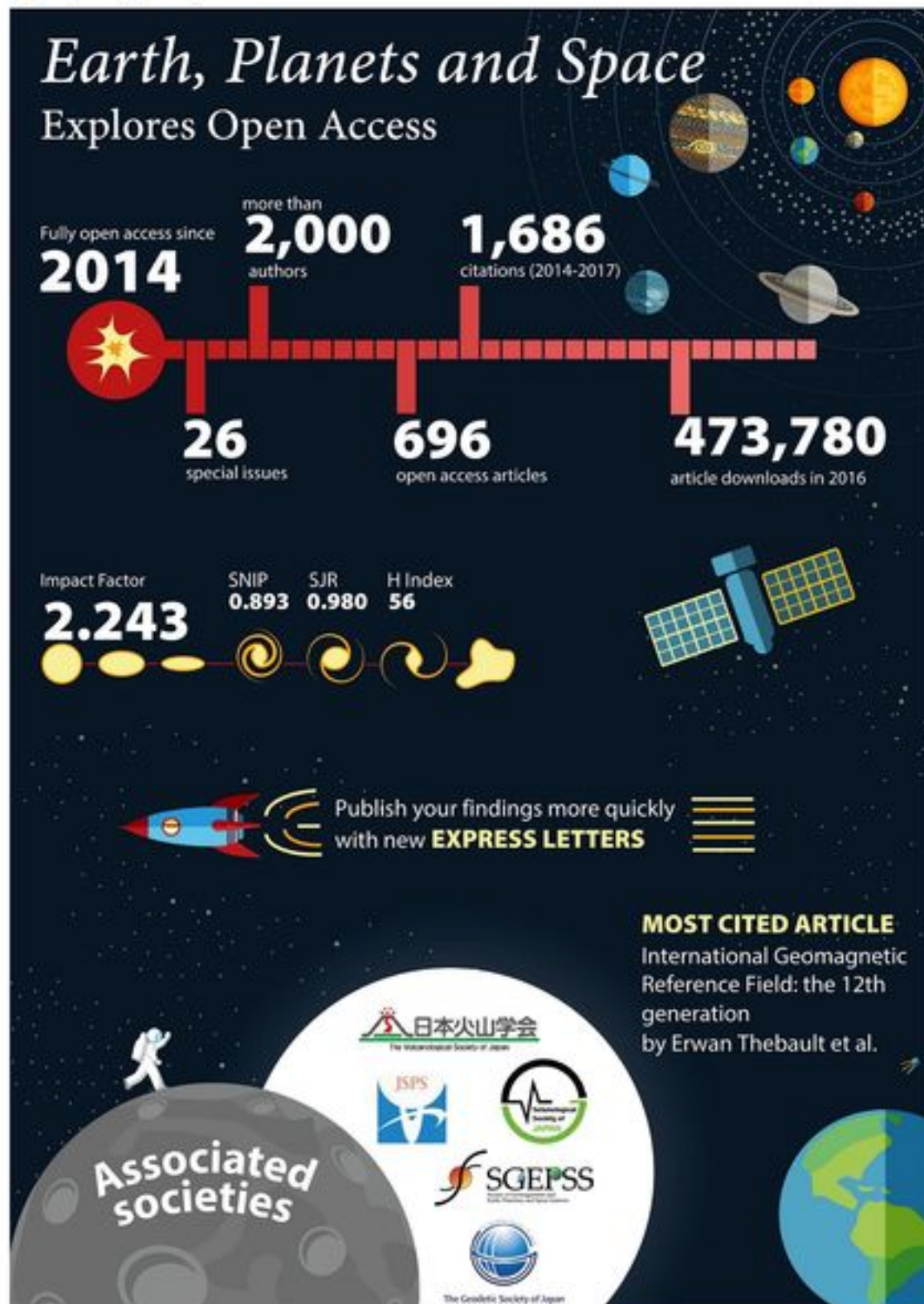
Special issues are important for EPS. We welcome special issue proposals on focused topics that are within the scope of the journal. Recent topics of the special issues are on the achievements of geoscientific projects or international conferences, or on geoscientific events, such as large earthquake events or volcano eruptions. In particular, recent special issues on International Geomagnetic Reference Field and on Kumamoto earthquake attracted good attention of readership. We will promote special

issues more internationally.

キーワード：オープンアクセス出版、Earth, Planets and Space
 Keywords: open access publication, Earth, Planets and Space



springeropen.com



A31213