

How should we study the origin and the generation of submergence tradition remains?

*Hisashi Nakagawa¹

1. TOYOHASHI CITY MUSEUM ART AND HISTORY

Lake Biwa is the largest and oldest Lake in Japan, and it has approximately 100 submerged archaeological sites. Among these sites, 10 sites have the old tradition of submerged village.

Not only Lake Biwa, there is a lot of such tradition in Japan. However it is hardly studied.

In this paper, I would like to write the study method of the old traditional submerged sites.

Keywords: Undeawater Archaeology, The sites of disaster, Lake Biwa, Japan

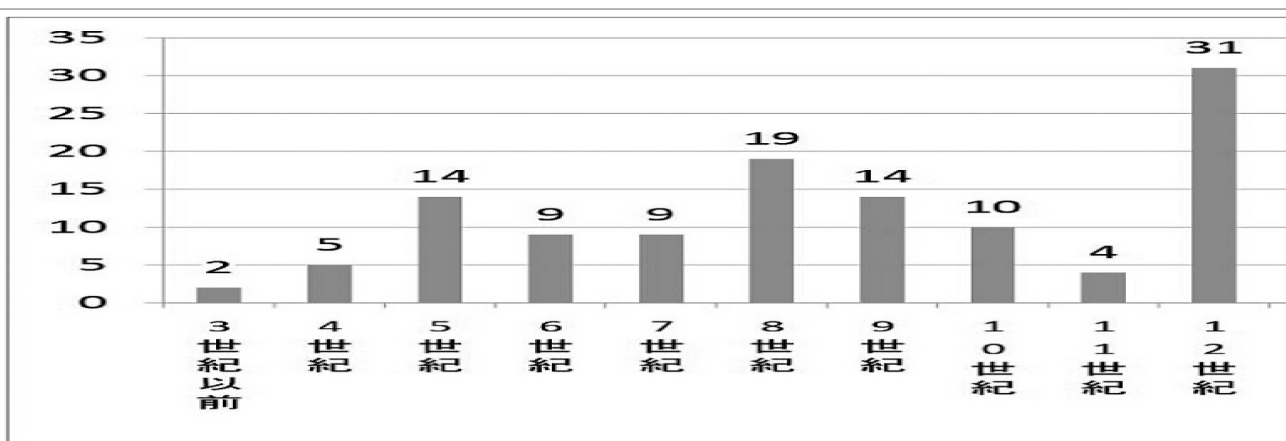


fig.1 西浜千軒の年代毎の



fig.2 石組墓