

高感度エミッション顕微鏡による HVPE (001) β 型酸化ガリウム SBD の リーク電流の起源の同定—多結晶欠陥

Polycrystalline Defects—Origin of Reverse Leakage Current in HVPE (001) β -Ga₂O₃ SBDs Identified by High Sensitive Emission Microscope

佐賀大院工¹, ノベルクリスタルテクノロジー², TDK (株)³

○(D1)スターン セイリープ¹, 佐々木公平², 川崎克己³, 平林潤³, 倉又朗人², 嘉数 誠¹

Saga Univ.¹, Novel Crystal Technology², TDK Corp.³

○(D1) S. Sdoeung¹, K. Sasaki², K. Kawasaki³, J. Hirabayashi³, A. Kuramata², and M. Kasu¹

E-mail: kasu@cc.saga-u.ac.jp

1. Introduction

β -Ga₂O₃ has a bandgap of 4.43–4.8 eV, which is wider than that of SiC and GaN; hence, it can be used to develop high-efficient high-power electronic devices. Recently, Sasaki et al. developed 20 A class SBDs with a low on-resistance of 6 m Ω ·cm². [1] However, it has been observed that in the SBDs fabricated on a single 2" wafer, some show a higher reverse current and a lower breakdown voltage than their neighbors. Therefore, in this study we investigate the killer defects that are responsible for the reverse leakage current in HVPE (001) β -Ga₂O₃ SBDs via high-sensitive emission microscopy. [2]

2. Fabrication

An n-type β -Ga₂O₃ epitaxial layer grown by HVPE on a 2" EFG-grown (001) single-crystal wafer substrate. The net donor doping density, $N_D - N_A$, is 1.4×10^{16} cm⁻³. The epitaxial thickness is ca. 10 μ m. For the ohmic contact, Ti/Au was evaporated on the entire back face, whereas for the Schottky barrier (SB) contacts, Ni/Au was evaporated on the surface.

3. Results and discussion

Emission microscope image of the SBD #B1205 with a 500 μ m diameter with a high reverse leakage current (density) of -38μ A (-19.3 mA·cm⁻²) at -30 V [Fig. 1(a)] shows two emission patterns, #1 and #2. AFM images [Fig. 1(b)] shows that emission pattern #1 is polycrystalline defect which contains numerous domains. In cross-sectional SEM image [Fig. 1(c)] shows a porous particle containing highly dense voids observed below the defect. In synchrotron X-ray topography [Fig. 1(d)] the polycrystalline defect was seen as a butterfly contrast.

4. Conclusion

Polycrystalline defect is found to be one of the main reverse leakage current paths of HVPE (001) β -Ga₂O₃ SBDs.

Acknowledgements

This work was supported by the NEDO and JSPS Grants-in-Aid for Scientific Research (No. 19H02616).

References

- [1] K. Sasaki *et al.*, IWGO2019, Dev 1, 1 (2019).
[2] Sdoeung S. *et al.*, APL. **117**, 022106 (2020).

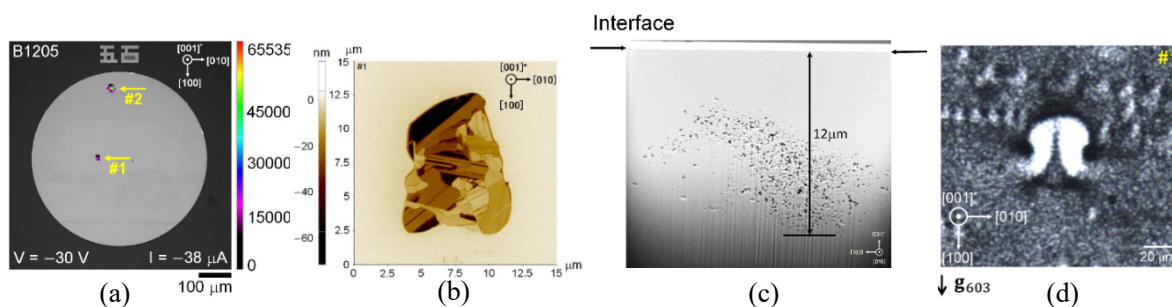


Fig. 1. (a) Emission microscope image of SBD #B1205, (b) AFM image, (c) cross-sectional SEM image, (d) synchrotron X-ray topography image of an emission pattern.